

# KOBELCO FC50 SPECS

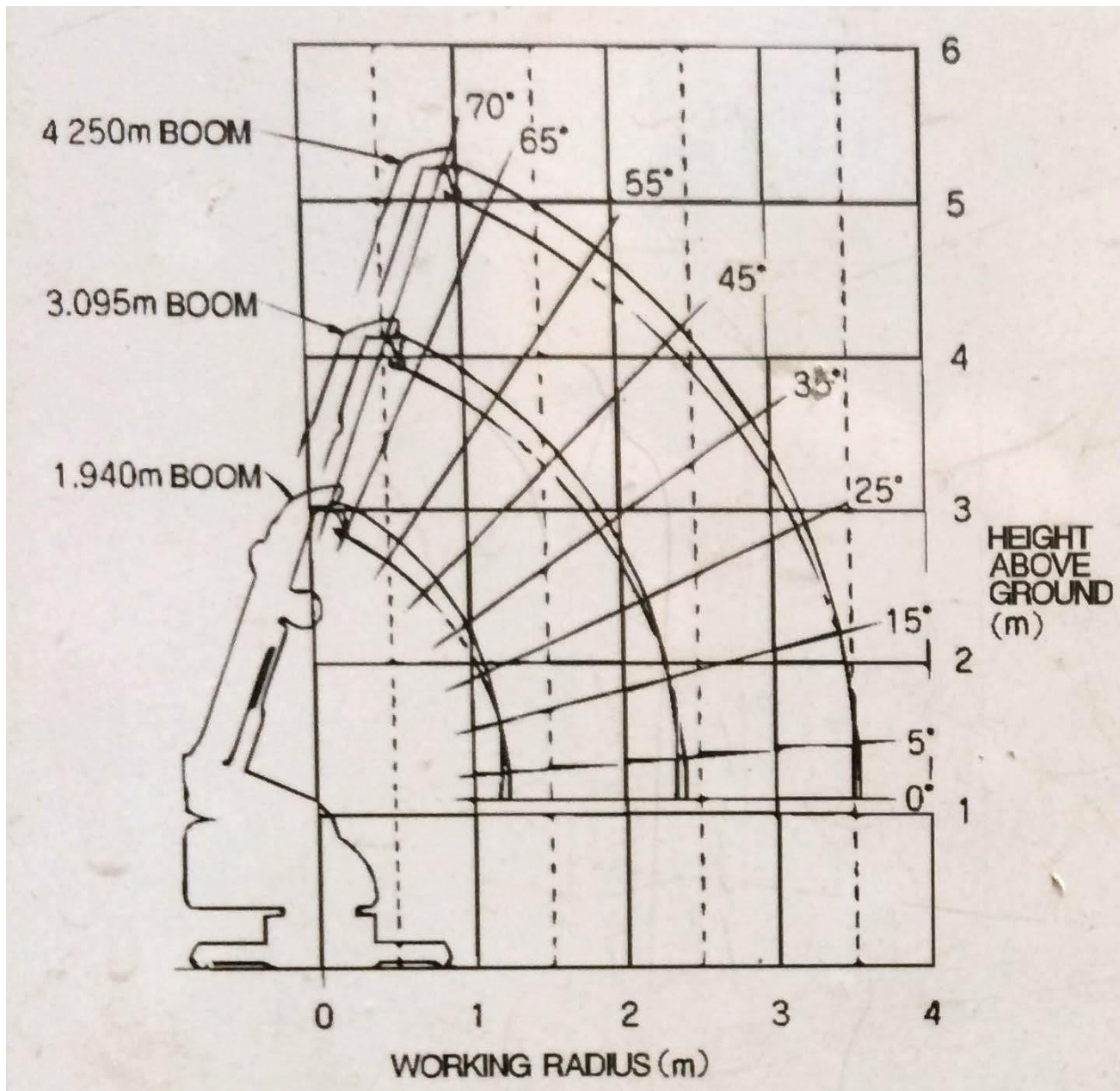
## Rated Load Chart

WITH OUTRIGGERS (FULLY EXTENDED)

WORKING RADIUS (M)	1.0	1.5	2.0	2.5	3.0	3.5
RATED LOAD (kg)	450	450	400	300	240	185

WITHOUT OUTRIGGERS

WORKING RADIUS (M)	1.0	1.5	2.0	2.5
RATED LOAD (kg)	250	155	100	60



# Specifications

Length: 1.89m

Width: 0.7m

Height: 1.5m

Weight: 1070kg

Working Pressure:  
0.32kg/cm<sup>2</sup>

Max safe working load:  
450kg

